

DTC	P1127	ETCS Actuator Power Source Circuit Malfunction
------------	--------------	---

CIRCUIT DESCRIPTION

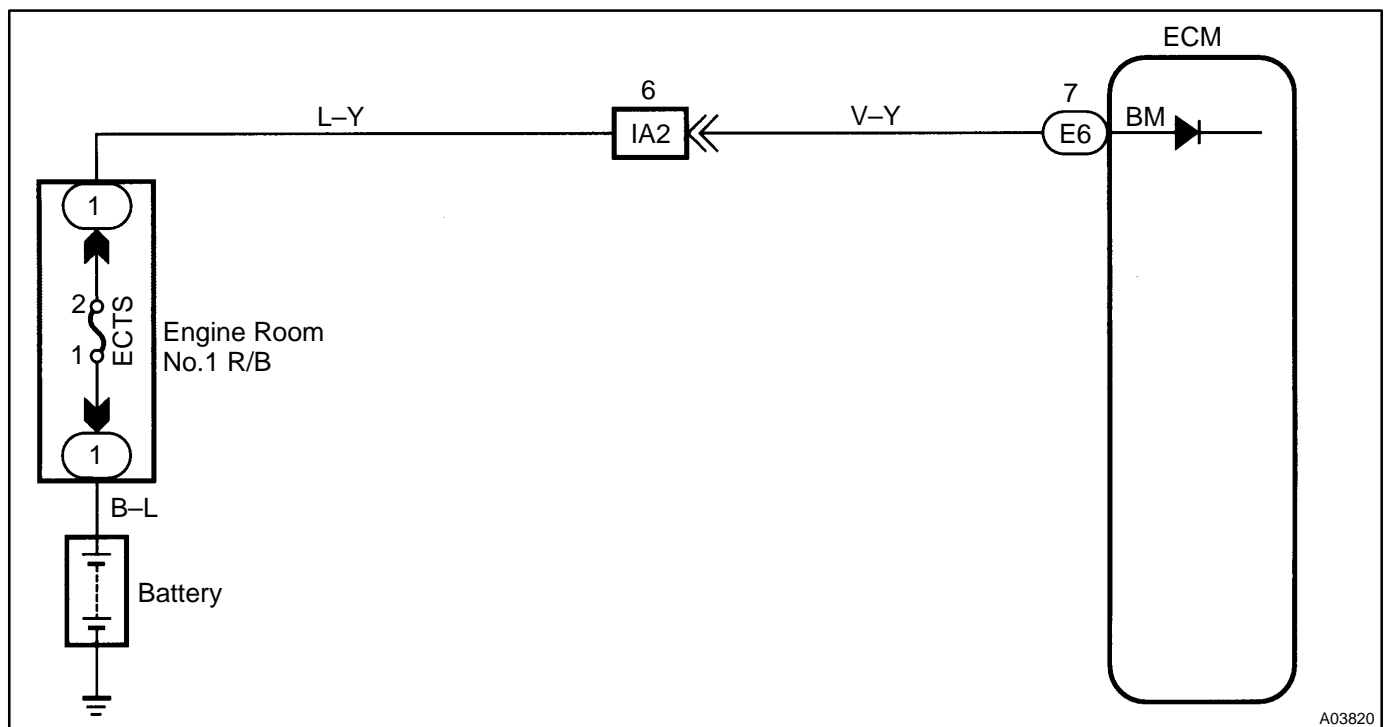
Battery positive voltage is supplied to terminal BM of the ECM even once when the ignition switch is OFF for the electric throttle control system.

If this DTC is stored, the ECM shuts down the power for the throttle motor and the electromagnetic clutch, and the throttle valve is fully closed by the return spring.

However, the opening angle of the throttle valve can be controlled by the accelerator pedal through the throttle cable.

DTC No.	DTC Detecting Condition	Trouble Area
P1127	Open in ETCS power source circuit	<ul style="list-style-type: none"> • Open in ETCS power source circuit • ECM

WIRING DIAGRAM

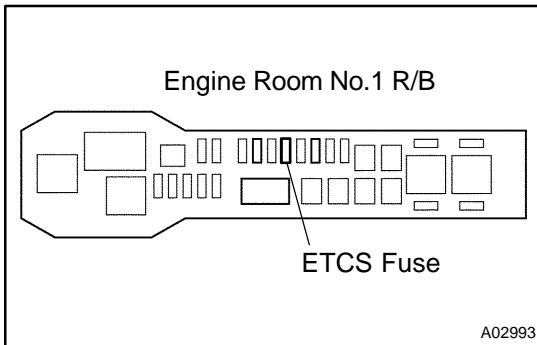


INSPECTION PROCEDURE

HINT:

Read freeze frame data using LEXUS hand-held tester or OBD II scan tool. Because freeze frame records the engine conditions when the malfunction is detected. When troubleshooting, it is useful for determining whether the vehicle was running or stopped, the engine was warmed up or not, the air-fuel ratio was lean or rich, etc. at the time of the malfunction.

1 Check ETCS fuse of engine room No.1 R/B.



PREPARATION:

Remove the ETCS fuse from the engine room No.1 R/B.

CHECK:

Check the continuity of the ETCS fuse.

OK:

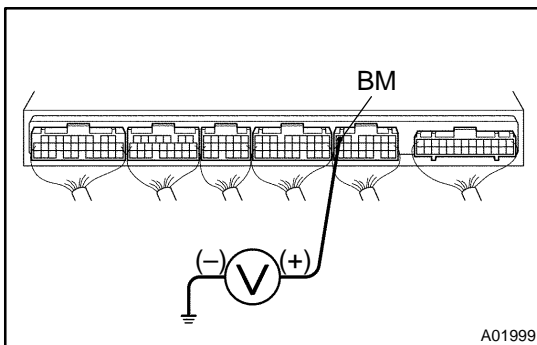
Continuity

NG

Check for short in all harness and components connected to ETCS fuse.

OK

2 Check voltage between terminal BM of ECM connector and body ground.



PREPARATION:

Remove the engine room ECM cover and hood.

CHECK:

Measure the voltage between terminal BM of the ECM connector and body ground.

OK:

Voltage: 9 – 14 V

OK

Check and replace ECM (See page [IN-32](#)).

NG

Check and repair harness or connector between battery and ETCS fuse, and ETCS fuse and ECM (See page [IN-32](#)).